



Trust[®]

valves and flow control specialist

IN-LINE COMPONENTS

ILC-1

ABOUT US

PROFILE

Trust Valves was established in 2008 and is part of Firsia Group. We operate in the valve market as distributor and stockist of internationally recognized valve brands. Our company is designed to provide efficient and reliable service in harsh industrial applications, combining the proven performance of the industry's most rugged platform with the widest variety of valves and flow control options.

MISSION

Build a partnership with our customers by providing solutions that have deep impact and enable them to achieve core objective. Trust Valves aims to provide the best products and customer service. At Trust Valves, customer satisfaction is the highest priority.

VISION

Control business by providing solutions that give substantial value to our customers, provide highly valued careers for our associates and deliver solid returns to our investors.



PRODUCT LINE

Y-STRAINERS

- Forged and Cast
- Sizes 1/4" through 24"
- Bolted and screwed cover (pressure seal and welded on request)
- Class ANSI 150 to 2500 (4500 on request)
- Replaceable screen
- Threaded, socket weld, butt weld and flanged ends



SIGHT GLASSES

- Plain, fixed flappers, spinner, floating ball
- Sizes 1/2" through 10"
- Class ANSI 150 to 300 and 800 (welded and threaded ends only)
- Bolted cover
- Threaded, socket weld, butt weld and flanged ends



STEAM TRAPS

- Thermodynamic and thermostatic
- Inverted bucket and float ball
- Sizes 1/2" through 2"
- Up to 60 bar
- Threaded, socket weld and flanged ends



All data are for reference only use and subject to changes without prior notice.

Y-STRAINER

FORGED STEEL – ASME B16.34



STANDARD FEATURES

- **Construction:** Screwed, Bolted and Welded Cover
Replaceable Screen
Drain Plug
- **Design:** ASME B16.34
- **Connections:** Socket Weld Ends ASME B16.22
Threaded Ends ASME B1.20.1
Butt Welding ends ASME B16.25
- **Testing:** API 598
- **Rating:** ASME B16.34
- **Marking:** MSS-SP 25
CE – PED
- **Certificates:** EN 10204 – 3.1 B

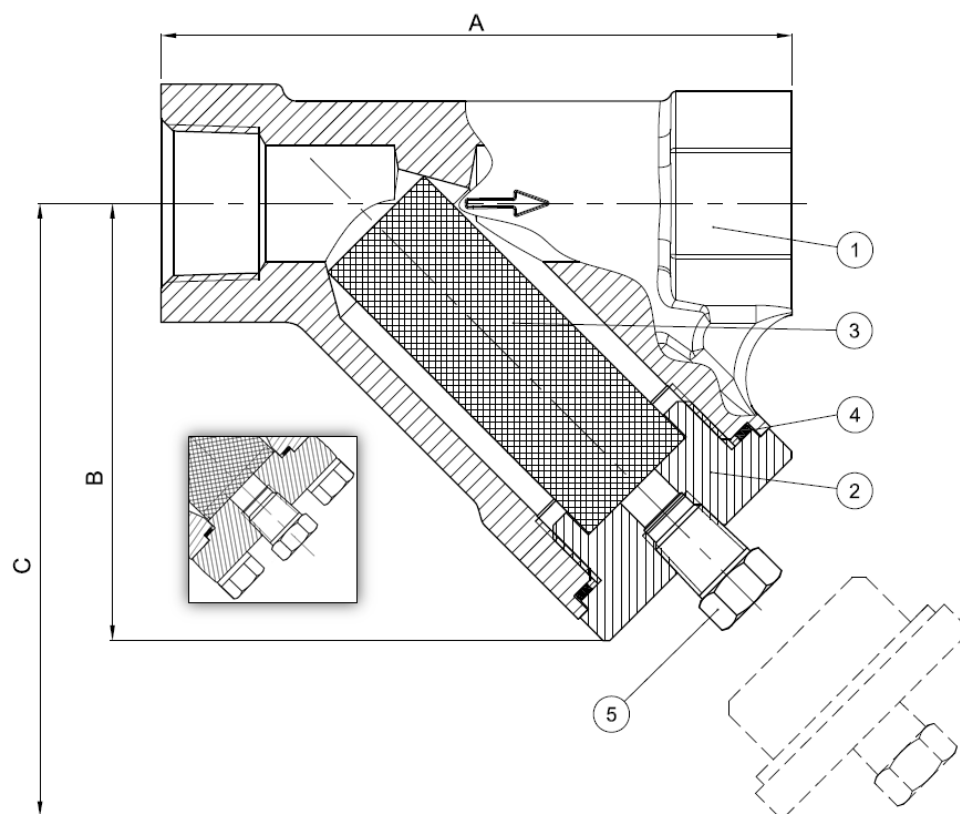
ASME B16.34 Y-STRAINERS - BODY/COVER MATERIALS & SCREENS

Body & Cover		Screen
Carbon Steel	ASTM A105	AISI 304
L.T. Carbon Steel	ASTM A350 LF2	AISI 316
Alloy Steel	ASTM A182 F11	Special Alloys
Alloy Steel	ASTM A182 F22	-
Alloy Steel	ASTM A182 F5	-
Alloy Steel	ASTM A182 F9	-
Stainless Steel	ASTM A182 F304/L	-
Stainless Steel	ASTM A182 F316/L	-
-Other materials available on request-		

All data are for reference only use and subject to changes without prior notice.

Y-Strainer – Screwed and bolted cover (Welded on request)

Threaded (ASME B 1.20.1 NPT), Socket Weld (ASME B 16.11) and Butt weld (ASME B16.25) ends



Part	Description
1	Body
2	Cover
3	Screen
4	Gasket
5	Drain Plug

Fig. 5700 Class #800	Ø	3/8"	1/2"	3/4"	1"	1.1/2"	2"
	A mm	90	90	110	130	160	185
	B mm	60	60	75	93	120	140
	C mm	85	85	100	140	200	200

Fig. 5705/6/7 Class #1500	Ø	3/8"	1/2"	3/4"	1"	1.1/2"	2"
	A mm	-	110	130	180	185	190
	B mm	-	75	93	144	140	140
	C mm	-	100	140	200	200	220

Fig. 5708/9/10 Class #2500	Ø	3/8"	1/2"	3/4"	1"	1.1/2"	2"
	A mm	-	190	190	190	190	213
	B mm	-	160	160	160	170	190
	C mm	-	220	220	220	230	260

NOTE: End to end dimensions are for reference only and according to standard manufacturers – ASME B16.10 not applicable

All data are for reference only use and subject to changes without prior notice.

Y-STRAINER

CAST STEEL – ASME B16.34



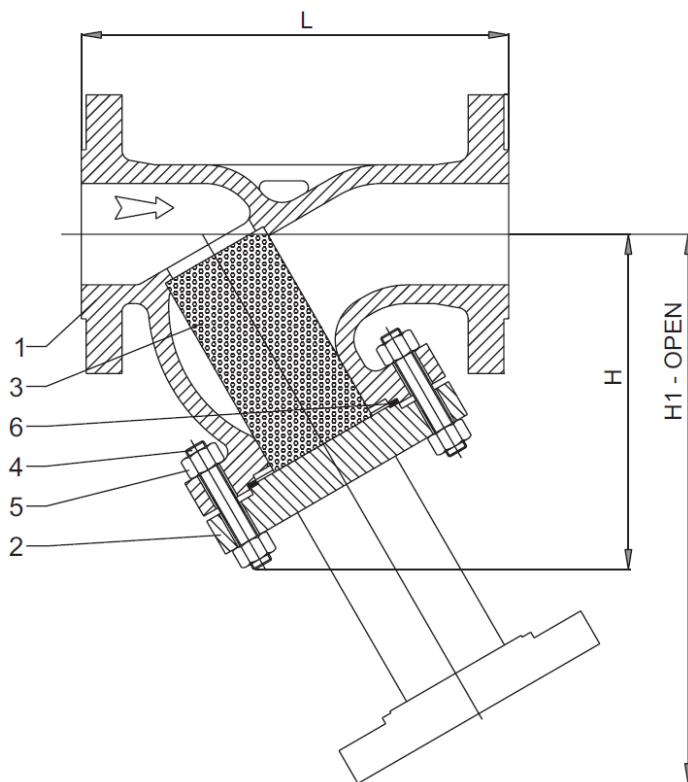
STANDARD FEATURES

- **Construction:** Bolted Cover
Pressure seal (on request)
Replaceable Screen
Drain Plug
- **Design:** ASME B16.34
- **Connections:** Flanged ends (ASME B16.5)
Butt Welding ends ASME B16.25
- **Testing:** API 598
- **Rating:** ASME B16.34
- **Marking:** MSS-SP 25
CE – PED
- **Certificates:** EN 10204 – 3.1 B

ASME B16.34 Y-STRAINERS - BODY/COVER MATERIALS & SCREENS

Body & Cover		Screen
Carbon Steel	ASTM A216 WCB / WCC	AISI 304
L.T. Carbon Steel	ASTM A352 LCB / LCC	AISI 316
Alloy Steel	ASTM A217 WC6	Special Alloys
Alloy Steel	ASTM A217 WC9	-
Alloy Steel	ASTM A217 C5	-
Alloy Steel	ASTM A217 C12	-
Stainless Steel	ASTM A351 CF3 / CF3M	-
Stainless Steel	ASTM A351 CF8 / CF8M	-
-Other materials available on request-		

All data are for reference only use and subject to changes without prior notice.



Y-Strainer - Bolted cover

Replaceable Screen

Flanged Ends RF/RTJ Finish (ASME B16.5)

Butt Welding Ends (ASME B16.25)

Drain Plug
or
Discharge Valve

Part	Description
1	Body
2	Cover
3	Screen
4	Bolts
5	Nuts
6	Gasket

Fig. 5710 Class #150	Ø	2"	3"	4"	6"	8"	10"	12"	14"	16"	18"	20"	24"
	RF/BW End to end	L mm.	203	241	292	406	495	622	699	787	914	978	1295
	RTJ End to end	L mm.	216	254	305	419	508	635	711	800	927	991	1308
	Center to top	H mm.	146	195	235	366	530	530	665	-	-	-	-
	Withdrawal dist.	H1 mm	222	285	350	537	733	733	880	-	-	-	-
	Approx Weight	Kg.	14	26	40	68	140	190	270	350	640	700	1370

Fig. 5720 Class #300	Ø	2"	3"	4"	6"	8"	10"	12"	14"	16"	18"	20"	24"
	RF/BW End to end	L mm.	267	318	357	445	559	622	711	838	864	978	1346
	RTJ End to end	L mm.	282	333	371	460	575	638	727	854	879	1035	1368
	Center to top	H mm.	145	223	235	330	365	570	740	-	-	-	-
	Withdrawal dist.	H1 mm	228	328	362	489	555	892	1040	-	-	-	-
	Approx Weight	Kg.	20	45	65	105	180	254	430	670	750	863	1625

Fig. 5721 Class #600	Ø	2"	3"	4"	6"	8"	10"	12"	14"	16"	18"	20"	24"
	RF/BW End to end	L mm.	292	256	435	559	660	787	838	889	991	1092	1397
	RTJ End to end	L mm.	295	359	435	562	663	790	841	892	994	1095	1407
	Center to top	H mm.	185	230	290	425	470	-	-	-	-	-	-
	Withdrawal dist.	H1 mm	267	335	427	602	680	-	-	-	-	-	-
	Approx Weight	Kg.	35	60	95	230	400	590	700	770	1140	-	-

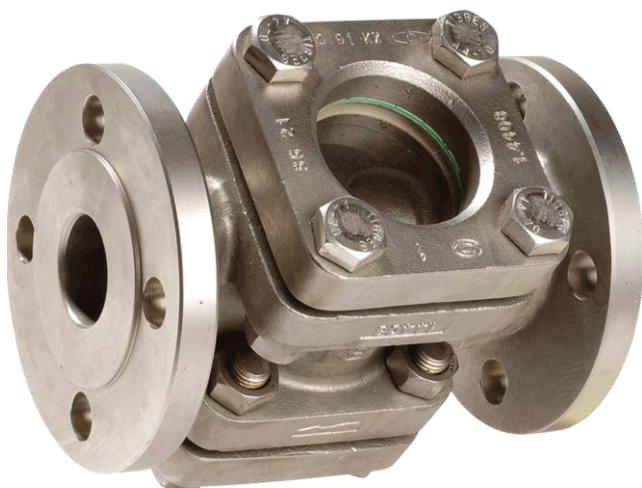
Fig. 5722 Class #1500	Ø	2"	3"	4"	6"	8"	10"	12"	14"	16"	18"	20"	24"
	RF/BW End to end	L mm.	368	470	546	705	832	991	1130	1257	1384	-	-
	RTJ End to end	L mm.	371	473	549	711	842	1000	1146	1276	1407	-	-
	Center to top	H mm.	-	-	-	-	-	-	-	-	-	-	-
	Withdrawal dist.	H1 mm	-	-	-	-	-	-	-	-	-	-	-
	Approx Weight	Kg.	60	100	160	400	600	-	-	-	-	-	-

Fig. 5723 Class #2500	Ø	2"	3"	4"	6"	8"	10"	12"	14"	16"	18"	20"	24"
	RF/BW End to end	L mm.	451	578	673	914	1022	1270	1422	-	-	-	-
	RTJ End to end	L mm.	454	584	683	927	1038	1292	1445	-	-	-	-
	Center to top	H mm.	-	-	-	-	-	-	-	-	-	-	-
	Withdrawal dist.	H1 mm	-	-	-	-	-	-	-	-	-	-	-
	Approx Weight	Kg.	-	-	-	-	-	-	-	-	-	-	-

All data are for reference only use and subject to changes without prior notice.

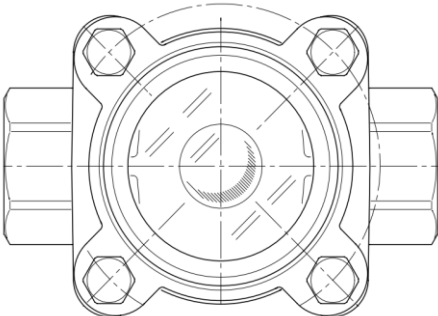
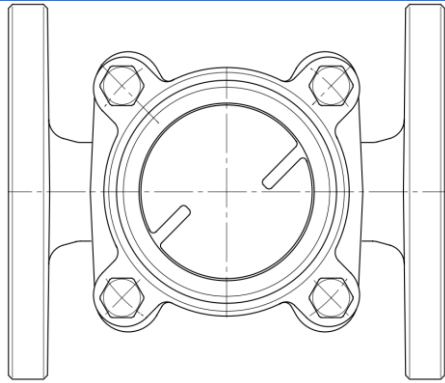
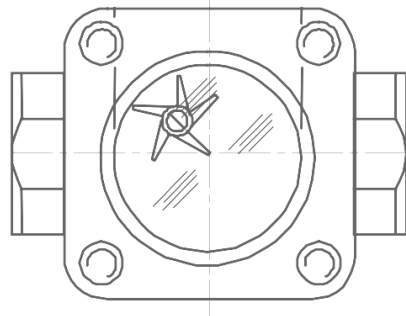
SIGHT-GLASS

FORGED AND CAST STEEL – ASME B16.34



STANDARD FEATURES

- **Construction:** Bolted Cover
- **Design:** ASME B16.34
- **Connections:** Socket Weld Ends ASME B16.22
Threaded Ends ASME B1.20.1
Flanged ends ASME B16.5
- **Testing:** API 598
- **Rating:** ASME B16.34
- **Marking:** MSS-SP 25
CE – PED
- **Certificates:** EN 10204 – 3.1 B

Flow indicator type		
		
Floating ball	Fixed flappers	Spinner

ASME B16.34 SIGHT GLASSES - BODY/COVER MATERIALS & GLASSES	
Body & Cover	Glasses
Carbon Steel	ASTM A105 / A216 WCB
L.T. Carbon Steel	ASTM A350 LF22 / LCB/LCC
Stainless Steel	ASTM A182 F316 / A351 CF8M
-Other materials available on request-	

All data are for reference only use and subject to changes without prior notice.

Sight-Glass – Bolted cover

Threaded (ASME B 1.20.1 NPT) and Socket Weld (ASME B 16.11) ends

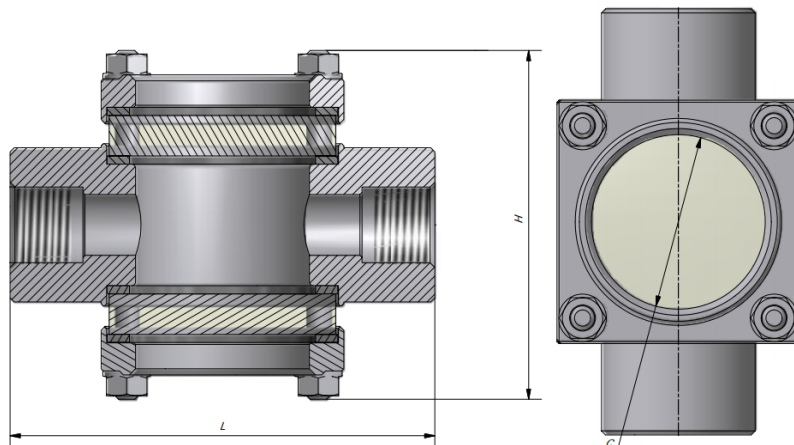


Fig. 5791/2 Class #300	Ø	1/2"	3/4"	1"	1.1/2"	2"
	L mm	90	90	100	127	140
	H mm	80	80	90	110	125
	C mm	40	40	50	70	80

NOTE: End to end dimensions are for reference only and according to standard manufacturers – ASME B16.10 not applicable

Sight-Glass – Bolted cover

Flanged ends (ASME B 16.5)

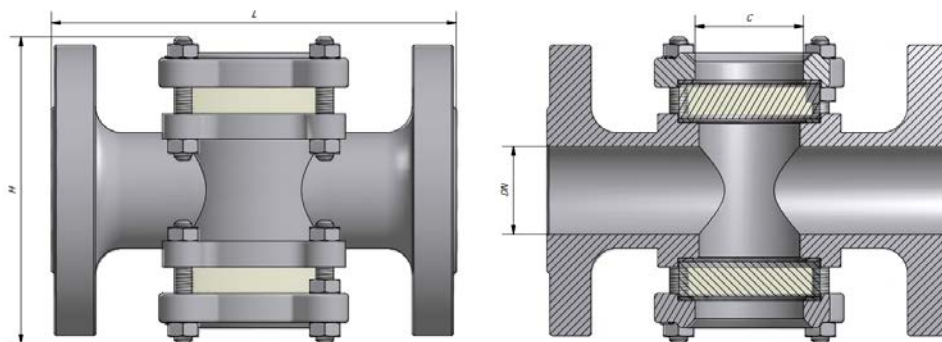


Fig. 5793/4 #150/300	Ø	1/2"	3/4"	1"	1.1/4"	1.1/2"	2"	2.1/2"	3"	4"	6"	8"	10"
	L mm	130	150	160	180	200	230	290	310	350	480	600	730
	H mm	110	110	120	125	135	150	215	215	270	330	380	450
	C mm	55	55	55	65	65	65	100	100	125	175	175	175

NOTE: End to end dimensions are for reference only and according to standard manufacturers – ASME B16.10 not applicable

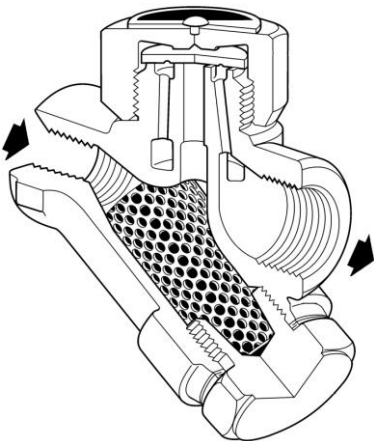
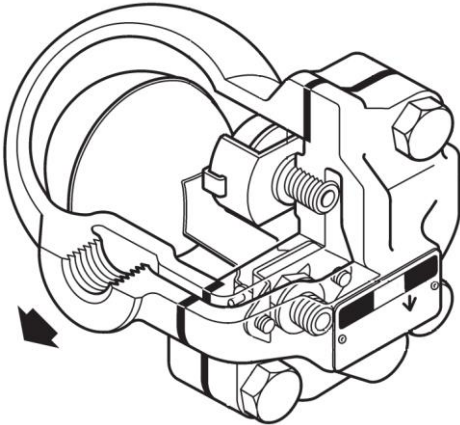
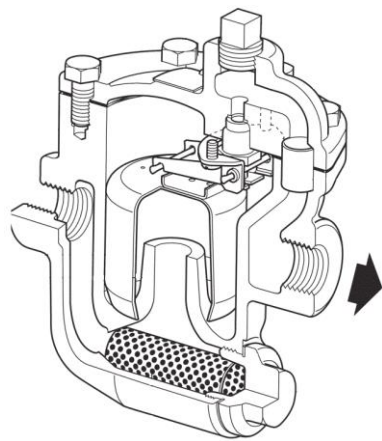
All data are for reference only use and subject to changes without prior notice.

STEAM TRAP FORGED AND CAST STEEL



STANDARD FEATURES

- **Construction:** Screwed and bolted Cover
- **Design:** Standard manufacturer
- **Connections:** Socket Weld Ends ASME B16.22
Threaded Ends ASME B1.20.1
Flanged ends ASME B16.5
- **Testing:** Standard manufacturer
- **Rating:** Up to #600
- **Marking:** MSS-SP 25
CE – PED
- **Certificates:** EN 10204 – 3.1 B

Steam trap type		
		
Thermodynamic and Thermostatic	Float ball	Inverted bucket

STEAM TRAP - BODY/COVER MATERIALS	
Ductile Iron – ASTM A536 (GGG40)	Alloy Steel – A182 F11/F22
Carbon steel – A105/A216 WCB	Stainless steel – A182 F304/F316

All data are for reference only use and subject to changes without prior notice.

Thermodynamic and Thermostatic steam traps

Threaded (ASME B 1.20.1 NPT) and Socket Weld (ASME B 16.11) ends

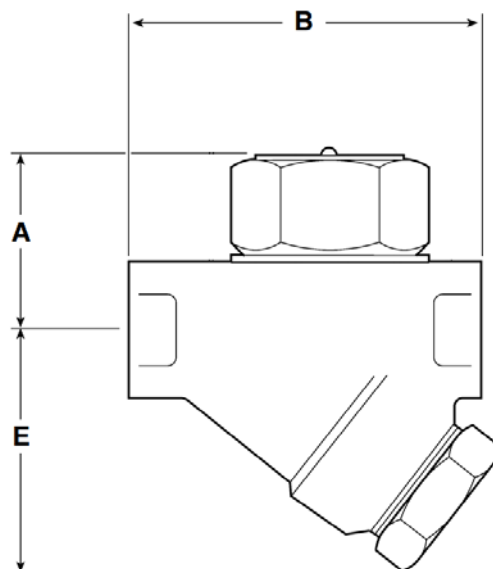


Fig. 5821/2 Class #600	Ø	1/2"	3/4"	1"
	B mm	80	90	90
	AB mm	140	150	165
	A mm	45	55	55
	E mm	60	70	70

NOTE: End to end dimensions are for reference only and according to standard manufacturers – ASME B16.10 not applicable

Thermodynamic and Thermostatic steam traps

Flanged ends (ASME B 16.5)

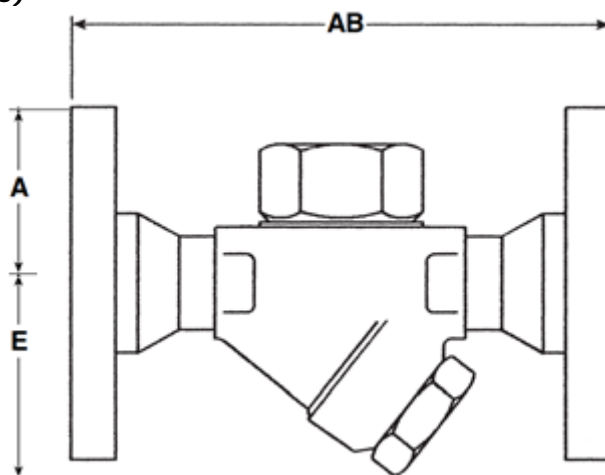


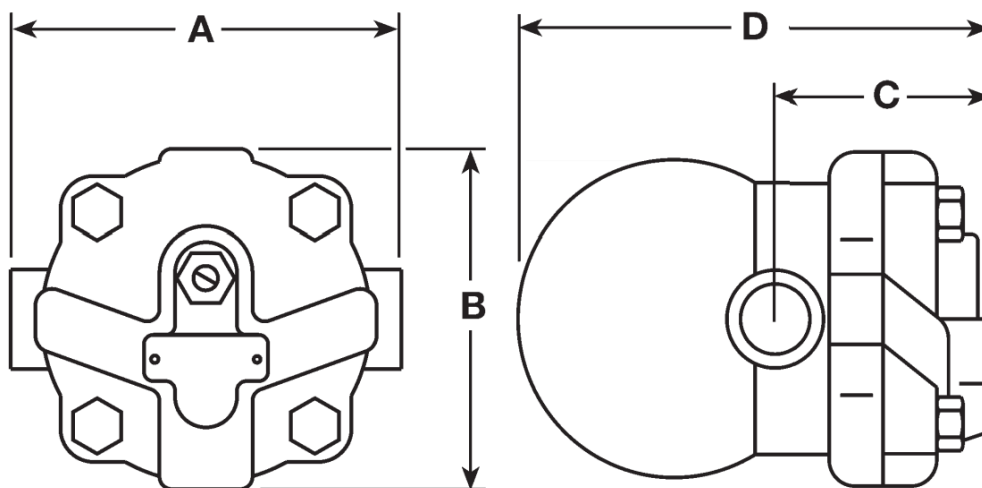
Fig. 5824/5 #150/300	Ø	1/2"	3/4"	1"
	B mm	80	90	90
	AB mm	140	150	165
	A mm	45	55	55
	E mm	60	70	70

NOTE: End to end dimensions are for reference only and according to standard manufacturers – ASME B16.10 not applicable

All data are for reference only use and subject to changes without prior notice.

Float ball steam traps

Threaded (ASME B 1.20.1 NPT) and Socket Weld (ASME B 16.11) ends

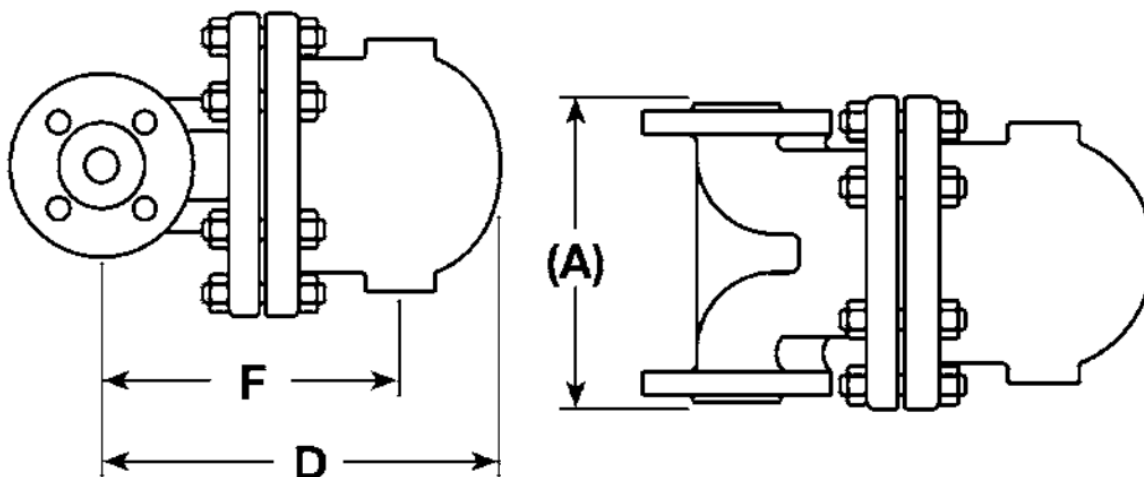


Class #600	Ø	1/2"	3/4"	1"
	A mm	121	121	145
	B mm	107	107	107
	C mm	67	67	75
	D mm	147	147	166

NOTE: End to end dimensions are for reference only and according to standard manufacturers – ASME B16.10 not applicable

Float ball steam traps

Flanged ends (ASME B 16.5)



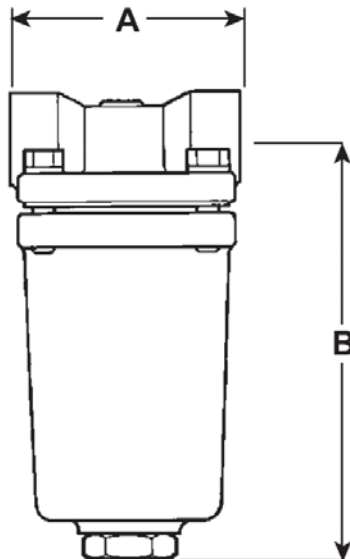
Class #150/300	Ø	1/2"	3/4"	1"	1.1/2"	2"
	A mm #150	203	205	208	321	313
	A mm #300	209	209	212	327	320
	D mm	215	225	282	337	347
	F mm	155	165	215	200	225

NOTE: End to end dimensions are for reference only and according to standard manufacturers – ASME B16.10 not applicable

All data are for reference only use and subject to changes without prior notice.

Inverted bucket steam trap

Threaded (ASME B 1.20.1 NPT) and socket weld (ASME B 16.11) ends

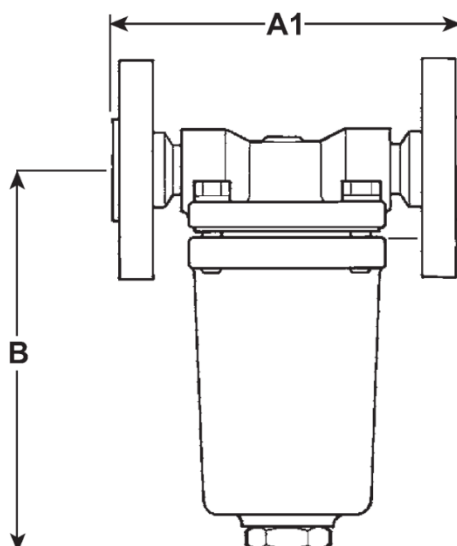


Class #600	Ø	1/2"	3/4"	1"
	A mm	121	121	145
	B mm	107	107	107
	C mm	67	67	75
	D mm	147	147	166

NOTE: End to end dimensions are for reference only and according to standard manufacturers – ASME B16.10 not applicable

Inverted bucket steam trap

Flanged ends (ASME B 16.5)



Class #150/300	Ø	1/2"	3/4"	1"
	A mm #150	203	205	208
	A mm #300	209	209	212
	D mm	215	225	282
	F mm	155	165	215

NOTE: End to end dimensions are for reference only and according to standard manufacturers – ASME B16.10 not applicable

All data are for reference only use and subject to changes without prior notice.



Trust Valves S.r.l.

Via Petrarca, 41/43
22070 Rovello Porro (CO)
Phone: +39 02 9675 4324
Fax: +39 02 9675 5803
www.trust-valves.com
info@trust-valves.com